

E-Newsletter – 5th November 2020

www.bera.co.uk



© Andrew Armstrong Photography

1) Information Corner

Remembrance Service at Campfield Road Cenotaph

Sadly, there will NOT be a Remembrance Service at Campfield Road Cenotaph this year. The Royal Artillery Association are sorry about the decision but it is in line with local and Central government advice.

Car Security

We have been contacted by a resident advising us that they have footage on their ring doorbell of a person on a pink bicycle with a bag over their shoulder, at 5.00am on 27th October, on their driveway.

Please make sure that all of the doors and windows of your vehicles are closed and locked and nothing valuable is left on display.

First Bus Services During the Second Lockdown

The following has appeared on the First website.

From Thursday 5th November 2020, First Essex services and safety measures will remain the same. Please check the website regularly for any updates.

Please try to plan your journey in advance, travelling at quieter times if you can. Purchase tickets via the First Bus App or Contactless where possible (if using cash, please use the exact change). Wear a face covering (unless exempt), sit away from other passengers, keep windows open and wash your hands before/after travelling.

Let's look after each other.

Arrive Bus Services During the Second Lockdown

The following has appeared on the Arriva Facebook and website pages which suggests their services will run at the current timetables during the second lockdown.

Following the announcement on Saturday 31st October about the new national lockdown restrictions for England that will come into effect from Thursday 5th November, we want to reassure you that we will continue to operate our current timetable. Our first priority is to keep our customers and our staff safe. Should there be any impact to our services and timetables, we will endeavour to update you as soon as possible on our website and via real-time data on our Arriva UK Bus app.

Scams

a) Homecare

There is a phone scam where the caller says he is calling from Homecare (not real) and your fridge protection is due but the date on your credit card has expired in 2019 so can you give them your new expiry date (do not do this). They also may give another home appliance like TV. The phone number being used is 0203 9603330. Do not entertain the caller just hang up.

Petition - Limit the Sale and Use of Fireworks to Organisers of Licensed Displays Only

A woman has lost an eye after a firework exploded in her face - hundreds of other incidents also reported: <https://news.sky.com/story/woman-who-lost-eye-after-firework-exploded-in-her-face-calls-for-ban-as-hundreds-of-emergency-incidents-revealed-12109999>

Petition - Limit the Sale and Use of Fireworks to Organisers of Licensed Displays Only: <https://petition.parliament.uk/petitions/319891>

2) Temporary Road Closures

Suffolk Avenue, Surrey Avenue, Kent Avenue & Middlesex Avenue, Leigh-on-Sea – Ensure safety of the public - 7th November 2020 & 9th November 2020 between the hours of 06:00 to 14:30.

To facilitate & ensure safety of public, they have imposed a temporary Prohibition of Traffic, Stopping, waiting, Loading and Unloading.

Whilst this notice is in operation, all vehicles will be prohibited from:

1. Entering & exiting Suffolk Avenue at it junction with Middlesex Avenue
2. Entering & exiting Surrey Avenue at it junction with Middlesex Avenue

3. Entering & exiting Kent Avenue at it junction with Middlesex Avenue
4. Entering & exiting Middlesex Avenue at it junction with Middlesex Avenue

This notice also prohibits;

5. Stopping, waiting, loading or unloading on the East side of Middlesex Avenue.

These prohibitions or restrictions will come into effect on **7th November 2020 & 9th November 2020 between the hours of 06:00 to 14:30.**

Whilst the closure is in place a diversion route via Norfolk Avenue will be signed on site. Resident's access will be maintained where possible.

3) A127 Major Works (A127 and the Bell Junction)

4) List of Applications Registered Week Ending 30th October 2020

APPLN. NO: 20/01719/FULH

Ward. Southchurch

Officer: Kara Elliott

Date Valid. 19 October 2020

ERECT SINGLE STOREY SIDE AND REAR INFILL EXTENSION, FORM HIPPED TO GABLE END ROOF EXTENSION OVER GARAGE AND CONVERT GARAGE IN TO HABITABLE ACCOMMODATION

19 SACKVILLE ROAD SOUTHEND-ON-SEA ESSEX

APPLN. NO: 20/01687/CLP

Ward. Thorpe

Officer: Hayley Thompson

Date Valid. 27 October 2020

HIP TO GABLE ROOF EXTENSION, DORMER TO REAR TO FORM HABITABLE ACCOMMODATION IN ROOFSPACE, ROOFLIGHTS TO FRONT, ALTER ELEVATIONS (LAWFUL DEVELOPMENT CERTIFICATE-PROPOSED)

18 BRUNSWICK ROAD SOUTHEND-ON-SEA ESSEX

APPLN. NO: 20/01794/GPDE

Ward. Thorpe

Officer: Oliver Hart

Date Valid. 26 October 2020

ERECT SINGLE STOREY REAR EXTENSION, PROJECTING 6.43M BEYOND THE EXISTING REAR WALL OF THE DWELLING, 2.3M HIGH TO EAVES AND WITH A MAXIMUM HEIGHT OF 2.6M

527 WOODGRANGE DRIVE SOUTHEND-ON-SEA ESSEX

5) List of Decisions Issued Week Ending 1st November 2020

APPLN. NO: 20/01381/FULH

Ward. Southchurch

Officer: Kara Elliott

ERECT A SINGLE STOREY FRONT/SIDE EXTENSION AND CONVERT GARAGE INTO HABITABLE ACCOMMODATION

48 WILLINGALE WAY THORPE BAY ESSEX

Decision: Grant Conditional Permission

APPLN. NO: 20/01419/FULH

Ward. Southchurch

Officer: Kara Elliott

ERECT SINGLE STOREY FRONT EXTENSION AND FIRST FLOOR SIDE EXTENSION, ALTER ELEVATIONS

24 FORTESCUE CHASE THORPE BAY ESSEX

Decision: Grant Conditional Permission

APPLN. NO: 20/01431/FUL

Ward. Southchurch

Officer: Spyros Mouratidis

ERECT DWELLINGHOUSE ON LAND ADJACENT 84 ARCHER AVENUE, LAYOUT HARDSTANDING, INSTALL VEHICULAR ACCESS ON TO ARCHER AVENUE AND ALTER ELEVATIONS TO EXISTING DWELLINGHOUSE

84 ARCHER AVENUE SOUTHEND-ON-SEA ESSEX

Decision: Grant Conditional Permission

APPLN. NO: 20/01379/FUL

Ward. Thorpe

Officer: Robert Lilburn

DEMOLISH EXISTING DWELLINGHOUSE AND ERECT A THREE STOREY BUILDING COMPRISING OF 3 SELF CONTAINED FLATS WITH ASSOCIATED PARKING TO FRONT AND REAR, LAYOUT AMENITY SPACE, REFUSE AND CYCLE STORAGE (AMENDED PROPOSAL)

3 THORPE ESPLANADE THORPE BAY ESSEX

Decision: Grant Conditional Permission

APPLN. NO: 20/01469/FULH

Ward. Thorpe

Officer: Oliver Hart

ERECT HIPPED TO GABLE ROOF EXTENSION AND INSTALL DORMER TO REAR WITH JULIETTE BALCONY

139 ST AUGUSTINES AVENUE THORPE BAY ESSEX

Decision: Grant Conditional Permission

APPLN. NO: 20/01626/GPDE

Ward. Thorpe

Officer: Oliver Hart

ERECT SINGLE STOREY REAR EXTENSION, PROJECTING 5.9M BEYOND THE EXISTING REAR WALL OF THE DWELLING, 3M HIGH TO EAVES AND WITH A MAXIMUM HEIGHT OF 3.6M

155 ST AUGUSTINES AVENUE THORPE BAY ESSEX

Decision: GPD Non Conditional

APPLN. NO: 20/01335/FULH

Ward. West Shoebury

Officer: Kara Elliott

HIP TO GABLE ROOF EXTENSION, ERECT DORMER TO REAR WITH JULIETTE BALCONIES, ERECT SINGLE STOREY REAR EXTENSION, PART SINGLE/PART TWO STOREY SIDE EXTENSION, ALTER ELEVATIONS

17 STROMA GARDENS SHOEBURYNES SOUTHEND-ON-SEA

Decision: Grant Conditional Permission

APPLN. NO: 20/01441/FULH

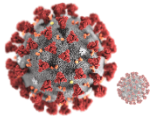
Ward. West Shoebury

Officer: Oliver Hart Applicant: Mrs S Hind ERECT PART SINGLE/PART TWO STOREY REAR EXTENSION, FIRST FLOOR SIDE EXTENSION, EXTEND FRONT TO FORM PITCHED ROOF AND INSTALL ROOFLIGHTS TO FRONT

31 WATERFORD ROAD SHOEBURYNES SOUTHEND-ON-SEA

Decision: Refuse Permission

6) Coronavirus Information



***Please be aware that the rate of cases is increasing in Southend and England ***

Further public health plea as coronavirus cases continue to rise

Southend-on-Sea Borough Council's Director of Public Health has issued a further plea to the local community as local positive COVID-19 cases continue to rise.

Although Southend-on-Sea's overall rate is below the East of England average (103 per 100,000), it has risen from 34.4 cases per 100,000 on 9 October to 92.8 per 100,000 as of Thursday 29 October (see graphic attached).

Cases have also risen quickly in the 60 and over age bracket, from 46.2 cases per 100,000 on Thursday 22 October to 76.9 cases per 100,000 just one week later.

All residents are being reminded of the public health basics and urging those with symptoms to stop the spread by self-isolating and booking a test.

Director of public health, says: "In recent weeks we have continued to see a rise in confirmed cases across the country, across Essex and across Southend-on-Sea. Most of these are attributed to people not following the public health advice that has been in place for many months now.

"Although we remain below the regional average and have done all we can to slow this rise in cases locally, we must remember that Coronavirus is still very much with us and we must not become complacent. We must all do our bit to help and follow national guidance.

"We are starting to see a rise in positive cases in the 60 plus age range and this is concerning. If you are 60 plus, and particularly if you are vulnerable, please follow the national guidance which will help stop you catching this disease. For the younger members of our community, please protect your family and don't expose them to the virus.

“It is extremely important that we all maintain social distancing by keeping at least two metres from others, maintain good hand-washing, wear face coverings and follow the ‘rule of six.’ Please do all of this to try and help our communities to stay safe and keep our rate as low as we possibly can.”

Cabinet member for adult social care and health, says: “We continue to work hard to keep our case rate as low as possible but it is crucial that you self-isolate if you have symptoms. Please call 119 and get tested as soon as possible, and isolate until you know the result. Do not be put off requesting a test if you have symptoms and please do so as soon as possible. It is important to note that there is support in place for those on low incomes. Please visit our website for further details on this.

“You must also self-isolate if you are told to by the national test and trace system. In this scenario, you must do so for the full period regardless of whether you have symptoms or not, or whether you receive a negative test result or not. This period will be 10 or 14 days depending on the circumstances. Due to the incubation period of this disease which can be up to 14 days, you must self-isolate for the period advised.

“Please follow this and national advice. If people don’t, we will continue to see cases rise, spread and reach people who are more vulnerable in our communities, leading to more severe illness and deaths in our community.”

Council responds to new national restrictions

On Saturday evening (31 October 2020), the Government announced that they are taking action nationally to control the spread of Coronavirus.

From Thursday 5 November until Wednesday 2 December 2020, the Government is taking the following action:

1. Requiring people to stay at home, except for specific purposes.
2. Preventing gathering with people you do not live with, except for specific purposes.
3. Closing certain businesses and venues.

Cabinet member for adult social care and health, says: “The Government has said that the single most important action we can all now take in fighting coronavirus, is to stay at home, to protect the NHS and save lives.

“I ask all local people, whatever their views, to please now come together as a community and adhere to the new national restrictions from Thursday.

“We have done very well so far and our positive case rate is comparatively low in Southend-on-Sea. Keeping it that way will be essential and help when the proposed end of these restrictions comes in December, at which point the Government has said it is looking to go back to a local approach that will be based on local data.

“If all of us keep up with the basics of good hand washing, wearing face coverings, maintaining our distance from those we don’t live with or who aren’t in your support bubble, and self-isolating and getting a test if you have symptoms, we can keep our rate as low as possible which will help keep people safe and well and get our economy back moving again when the time comes.”

Leader of the council, says: “We know that this announcement will worry many people in our local community and in local businesses. These new restrictions will undoubtedly be hard and we are seeking further guidance from the Government on any further business and employee support that may be available on top of what has already been announced nationally.

“Shielding is not being reintroduced but Government advice states that if you are aged 60 years or over, or deemed clinically vulnerable because you have an underlying health condition, you should be especially careful to follow the rules and minimise your contacts with others.

“Others who are deemed clinically extremely vulnerable to coronavirus due to having specific serious health conditions are now advised to work from home. If you cannot work from home, you are advised not to go to work and may be eligible for Statutory Sick Pay (SSP) or Employment Support Allowance (ESA). You are encouraged to stay at home as much as possible, but are encouraged to go outside for exercise.

“Throughout the pandemic the council, the community, local volunteers and our great voluntary sector have worked together and looked after each other, and the support provided by Southend Coronavirus Action will remain in place.

“We had already started making calls to over 7,000 vulnerable local people and that work will continue in the weeks ahead. If you do not have a family support network in place and need help, please reach out to family or friends, visit our website or call 01702 212497.

“Our staff are available to offer advice and information and where necessary link you to direct support available from the council or within the community to help you stay at home as much as possible or self-isolate if you need to.”

The council’s director of public health, says: “It is important to remember that until Thursday 5 November, Southend-on-Sea will remain at MEDIUM local COVID alert level and we must adhere to these local restrictions until then, when we will move to the national approach.

“From Thursday 5 November, please adhere to the new national restrictions, including not leaving your home unless for the specific purposes outlined by the Government and not socially meeting indoors with anyone outside of your household or bubble.

“Please do continue to exercise or visit outdoor public places but only do this with the people you live with, your support bubble, or one person from another household.

“Complying with the new measures will help limit the spread of coronavirus in our local community, reduce the impact on our local NHS and save lives.”

The new restrictions mean that the council’s museums and galleries and leisure facilities will be required to close by Thursday 5 November and until Wednesday 2 December. Belfairs golf course will also close for golf. The council awaits confirmation about library services which were not covered in the announcement, along with advice on how local Remembrance services may be affected.

Local parks, open spaces and playgrounds will remain open.

A full list of the business closures will be published next week and set out in law.

The full new guidance was published on Monday 2 November and the Government will write to everybody who is clinically extremely vulnerable to set out detailed advice to follow while the new restrictions are in place.

The new restrictions will be underpinned by law which will make it clear what you must and must not do from 5 November. The relevant authorities, including the police, will have powers to enforce the law – including through fines and dispersing gatherings.

Government support for self-employed announced

Self-employed workers will be able to claim support to reflect the furlough extension as England enters a new four-week lockdown. Workers will be able to claim 80 per cent of their average trading profits for November, up to £5,160.

Month-long lockdown for England

A four-week lockdown will begin in England from Thursday, as COVID-19 cases continue to rise, the Prime Minister has told the nation. Pubs, restaurants, gyms, non-essential shops and places of worship will be forced to close, but schools, colleges and universities can remain open. The Treasury announced that businesses which are forced to close in England can receive grants of up to £3,000 per month, while councils will be given £1.1 billion for one-off payments to firms in their areas.

Furlough scheme extended until December

The Government’s furlough scheme, which has paid up to 80 per cent of the wages of millions unable to work during the coronavirus pandemic, has been extended until December as the country prepares to enter a month-long lockdown from this Thursday.

Confirmed UK COVID-19 cases pass one million

The UK has surpassed the one million COVID-19 cases mark, with another 21,915 confirmed cases reported yesterday. Only Spain has recorded more cases in Europe and the exact number of infections in the UK is thought to be far higher.

Extremely vulnerable advised not to go to work

Clinically extremely vulnerable people in England should not go to work and only go out for exercise and to attend health appointments during the new lockdown under

updated government guidance. The Government is to give councils in England more than £32 million to fund support and access to local services for more than 2.24 million clinically extremely vulnerable people.

New care home visits guidance in England defended by minister

The care minister has said that new guidance for care homes in England will give people "more opportunities to see loved ones in a safe way". It is suggested care homes introduce COVID-19-secure floor-to-ceiling screens, visiting pods or window visits, but charities have said such measures won't be practical.

All pupils and staff must wear masks in secondary school corridors

Pupils and teachers in all of England's secondary schools and colleges will be required to wear face masks in communal areas and corridors from today. New government guidance also says that "clinically extremely vulnerable" staff members should not come into school. Head teachers said schools would need help to pay for supply teachers.

Weekly Briefing on Local Decisions & Actions re Coronavirus outbreak 30th October 2020

Key updates/actions

- **Local COVID-alert tiers** – Essex County Council has moved into HIGH alert level. Southend-on-Sea remains in MEDIUM alert and has not yet made a request to move tiers.
- **Local COVID-alert information** is available on our website and will be regularly updated to reflect the current position: www.southend.gov.uk/covidalert
- **National information on the COVID-alert levels** is available on GOV.UK
- **Travelling and mixing between different alert tier areas:** Information on this has been published on our website.
- **Coronavirus case data:** This is published on our website and now also includes the daily 7 day rate of positive cases per 100,000. Some of the data from that page has been pulled out and is below and attached.
- **7-day rate** of positive cases as of **29 October was 92.8 per 100,000** (up from 67.7 per 100,000 on 22 October and 36 per 100,000 on 8 October). The rate in the **60 and over age bracket is at 76.9 per 100,000** (up from 46.2 per 100,000 on 22 October).
- **ONS death data:** Southend-on-Sea residents' deaths registered inside and outside of Southend-on-Sea based on any mention of COVID-19 on the death certificate that occurred up to 9

October 2020 but were registered up to 17 October 2020: **214 (no change)**

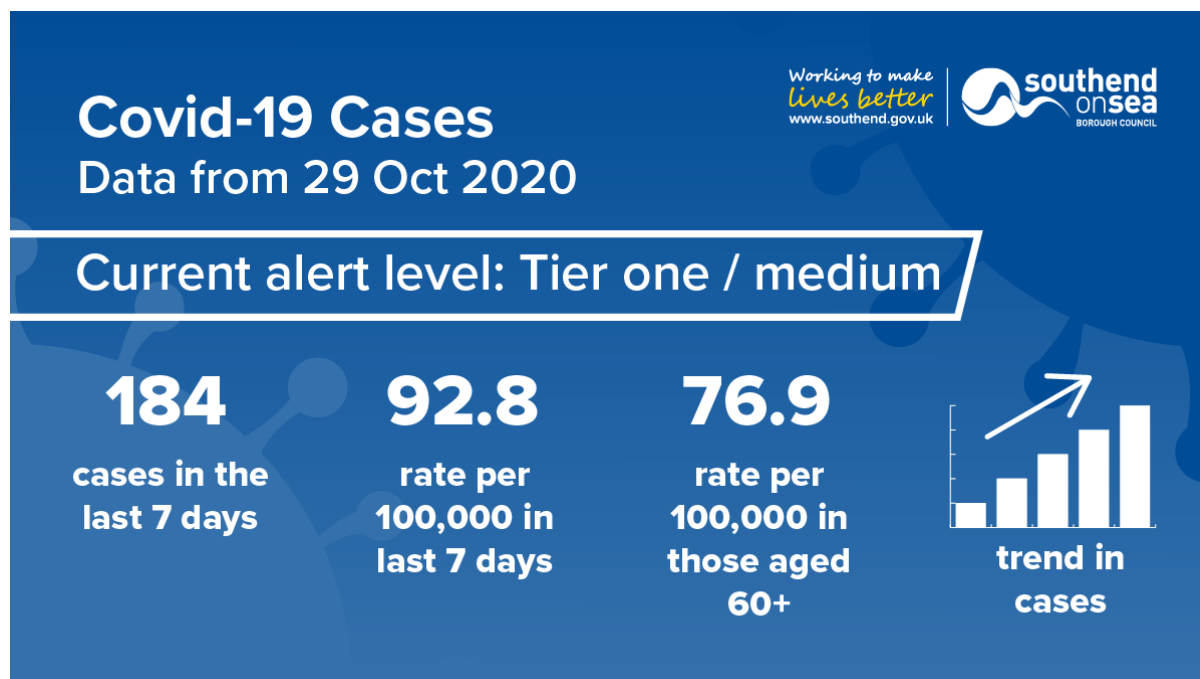
- **New local approach for local contact tracing:** A new approach to local contact tracing started this week.
- **Further public health plea issued:** With local positive COVID-19 cases continuing to rise, the local community are being urged to do their bit.
- **Remembrance 2020:** Residents urged to honour the fallen whilst protecting the living.
- **National and local data:** The national NHS Digital information shows information by time intervals (for example, 3-days, 7-days, 30-days, etc), as well as the total numbers and requests or referrals to NHS 111.

Other

Out of hours:

Urgent issues arising out of hours should be reported to the out of hours service in accordance with standard practice. The phone number is 01702 215000.

The out of hours service will then contact the relevant Council officer who is on-call or the relevant contractor such as Veolia. They also have access to the town link radio and CCTV.



Summary of Covid-19 related Government announcements 2nd November 2020

As you will be aware, central Government has announced national restrictions, which will come into effect at 00:01 on Thursday 5 November 2020.

We must stay at home wherever possible and only leave for specific reasons:

The announcement details specific reasons that people are allowed to leave their homes:

Shop for food and other basic necessities

Exercise once a day both alone or with other members of the same household or one friend

For medical requirements, such as to provide care or attend an appointment

Travel to and from work, where your place of work remains open and cannot be done from home

If you need to escape harm, eg domestic abuse.

Full information on the restrictions can be found on the central Government website:

<https://www.gov.uk/guidance/new-national-restrictions-from-5-november>

Locally:

Until Thursday we remain in tier 1 and tier 1 restrictions must be adhered to.

By Thursday, some services will be closed, as per Government regulations. The corporate website will be updated with details of which services will be affected, throughout today (2nd) and ongoing as per any changes. This is a fast moving situation and I would expect changes up to the vote in Parliament on Wednesday. November is different to the lockdown we experienced in March and at this stage, some of the services that were closed in March remain open, eg household waste and recycling centres. Updates and details will be available as the information comes in:

<https://www.southend.gov.uk/council-8/school-closures-affected-services/2>

Support:

The helpline is still available for those who need it, and who have no family or friends to support them locally: 01702 215497.

Those on the clinically extremely vulnerable list are already being contacted individually.

We will continue to promote the support available to members of the public and businesses and will ensure the corporate website is updated with any additional support:

<https://www.southend.gov.uk/homepage/438/coronavirus-advice-and-support>

Helpful contact numbers for the public:

<https://www.southend.gov.uk/health-wellbeing/coronavirus/10>

Out of hours

Urgent issues arising out of hours should be reported to the out of hours service in accordance with standard practice.

The phone number is 01702 215000.

The out of hours service will then contact the relevant Council officer who is on-call or the relevant contractor such as Veolia. They also have access to the town link radio and CCTV.

Summary of Covid-19 related Government announcements 3rd November 2020

Testing

- The UK's daily coronavirus testing capacity passed the 500,000 mark on Saturday 31 October.
- Mass testing pilot in Liverpool, where everyone living or working in Liverpool will be offered COVID-19 testing, whether they have symptoms or not.

Guidance has been updated for the Adult Social Care Infection Control Fund: round 2:

- to clarify the interaction between the Infection Control Fund and the Test and Trace Support Payment scheme; and
- to add conditions under which local authorities may propose an alternative approach for allocating infection control funding for community care.

Guidance for Remembrance Sunday events has been updated to reflect the lockdown restrictions

COVID-19 business update 4th November

As we approach the next lockdown, we can confirm that the legislation has now been issued which provides details of which businesses are able to trade and which are not. We would encourage all businesses to refer to this legislation to determine their own circumstances, or to read the guidance document which was issued on the 31 October, following the Prime Ministers announcement.

During this period of lockdown:

People are required to stay at home, except for specific purposes

People should not gather with people they do not live with, except for specific purposes

People should work from home where possible

Businesses that are required to close in England due to these national restrictions will be eligible for grant payments, as detailed on the Southend Borough Council webpage. This page is regularly updated with new information. Business premises forced to close in England are to receive grants worth up to £3,000 per month under the Local Restrictions Support Grant and £1.1bn is being given to Local Authorities, distributed on the basis of £20 per head, for one-off payments to enable them to support businesses.

The furlough scheme will remain open until December, with employees receiving 80% of their current salary for hours not worked, up to a maximum of £2,500. Under the extended scheme, the cost for employers of retaining workers will be reduced in comparison to the scheme which ended on 31 October.

The following guidance has been updated in line with this change:

Check if you can claim for your employees' wages through the Coronavirus Job Retention Scheme

Calculate how much you can claim using the Coronavirus Job Retention Scheme

Claim for wages through the Coronavirus Job Retention Scheme

Check if your employer can use the Coronavirus Job Retention Scheme

Financial business support has been extended until 31 January 2021 and includes:

The Coronavirus Business Interruption Loan Scheme (CBILS) which provides financial support to smaller businesses affected by coronavirus

The Bounce Back Loan Scheme (BBLs) which enables smaller businesses to access finance more quickly during the coronavirus outbreak

The Coronavirus Large Business Interruption Loan Scheme (CLBILS) provides financial support to larger businesses

The Future Fund issues convertible loans between £125,000 to £5 million to innovative companies which are facing financing difficulties.

The Housing and construction industry have been told to keep working, but to adhere to guidance in order to ensure building and repairing homes can continue safely and that people can buy, sell and move home. This includes guidance for site operations, working in people's homes and moving home.

Self-employed

There will be an increase in support to the self-employed over the coming months.

The Self-Employment Income Support Scheme Grant Extension provides critical support to the self-employed in the form of two grants, each available for three month periods covering November 2020 to January 2021 and February 2021 to April 2021.

Advice for Animal related businesses

The latest information received relating to animal related businesses (Update 4th November 2020 and subject to change depending on Government Advice)

UK Visas and Immigration

Updated advice for UK visa applicants and temporary UK residents for if an individual is in the UK and their visa or leave expires between 1 November and 30 November 2020.

Other related news

Driving theory tests and practical driving tests will be suspended during the lockdown period

Please remember:

If you do have a confirmed COVID-19 case within your business it is important that you refer to the Action Card appropriate to your business for guidance on the next steps and that you contact Public Health England on 0300 303 8537 option 1 or email.

For the Southend on Sea Borough Council response to Covid 19 please go to - <https://www.southend.gov.uk/businesscorona>

For updates on the Governments response to Covid19, please go to - <https://www.gov.uk/government/publications/guidance-to-employers-and-businesses-about-covid-19/covid-19-support-for-businesses>

If you require support from BEST Growth Hub - please complete some basic information to enable them to call you back

[https://southendcovid19forms.evolutive.co.uk/\(S\(olcxjvy4j5smk1kfvvybaeat\)\)/FormPreApp1.aspx?m=1](https://southendcovid19forms.evolutive.co.uk/(S(olcxjvy4j5smk1kfvvybaeat))/FormPreApp1.aspx?m=1)

Summary of Covid-19 related Government announcements 4th November 2020

10 Downing St

- PM Boris Johnson made a statement to the House of Commons today (4th), on COVID-19. MPs have voted in favour of the proposed regulations for England, voting 516 to 38.
- o National restrictions will commence at 00:01 tonight.

DwP

- Guidance has been updated on what to do if you're employed and cannot work due to COVID-19. Updates include eligibility conditions for Universal Credit, New Style Jobseeker's Allowance and New Style Employment and Support Allowance; Pension Credit, and the Test and Trace Support Payment as other financial help that can be claimed.

DoHSC

- Shielding guidance has been updated to advise further precautions for this group on top of the tougher national measures being introduced. The clinically extremely vulnerable are strongly advised to stay at home at all times, unless for exercise or doctors' appointments.
- o A press release highlights a range of support available, backed by over £32 million government funding for local councils
- Face covering guidance is updated to add information on when to wear face coverings, and guidance for staff.
- In new guidance, Care homes will be encouraged and supported to provide safe visiting opportunities as new national restrictions come into effect.

DfE

- Guidance is published on how new national restrictions to control the spread of coronavirus impact education, childcare and children's social care settings.

Marine Management Organisation

- In a press release, the Marine Management Organisation invites grant applications to help ports or harbours impacted by the pandemic and to provide

health and safety equipment for fishing vessel owners. Grants of up to £100,000 each are available for existing projects that are mitigating impacts of coronavirus at ports and harbours and bringing benefits to the local area.

Department for Business, Energy & Industrial Strategy

· In a press release, to help the UK 'build back greener' - businesses are set to benefit from £134m investment, enabling ground-breaking clean growth projects develop new technologies and secure new jobs.

- END -