

07 – SOUTHCHURCH PARK

Address: Northumberland Crescent, Southend-on-sea, Essex, SS1 2XB



INTRODUCTION

Ground Control have been appointed by Southend-On-Sea City Council to provide conceptual design proposals to enhance the play areas located within Southend's various parks and landscapes.

The design proposals look to improve the play value and quality of equipment, site connections and surfacing, inclusivity and accessibility, and the landscape and biodiversity across all of the sites within Southend-On-Sea.

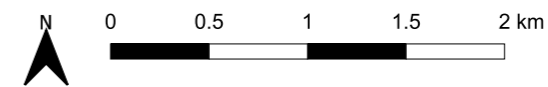
The play area enhancement parks include Priory Park, Bournes Green Park, Chalkwell Park, Belfairs Park, Oakwood Park, Friars Park and Southchurch Park.



SCC boundary

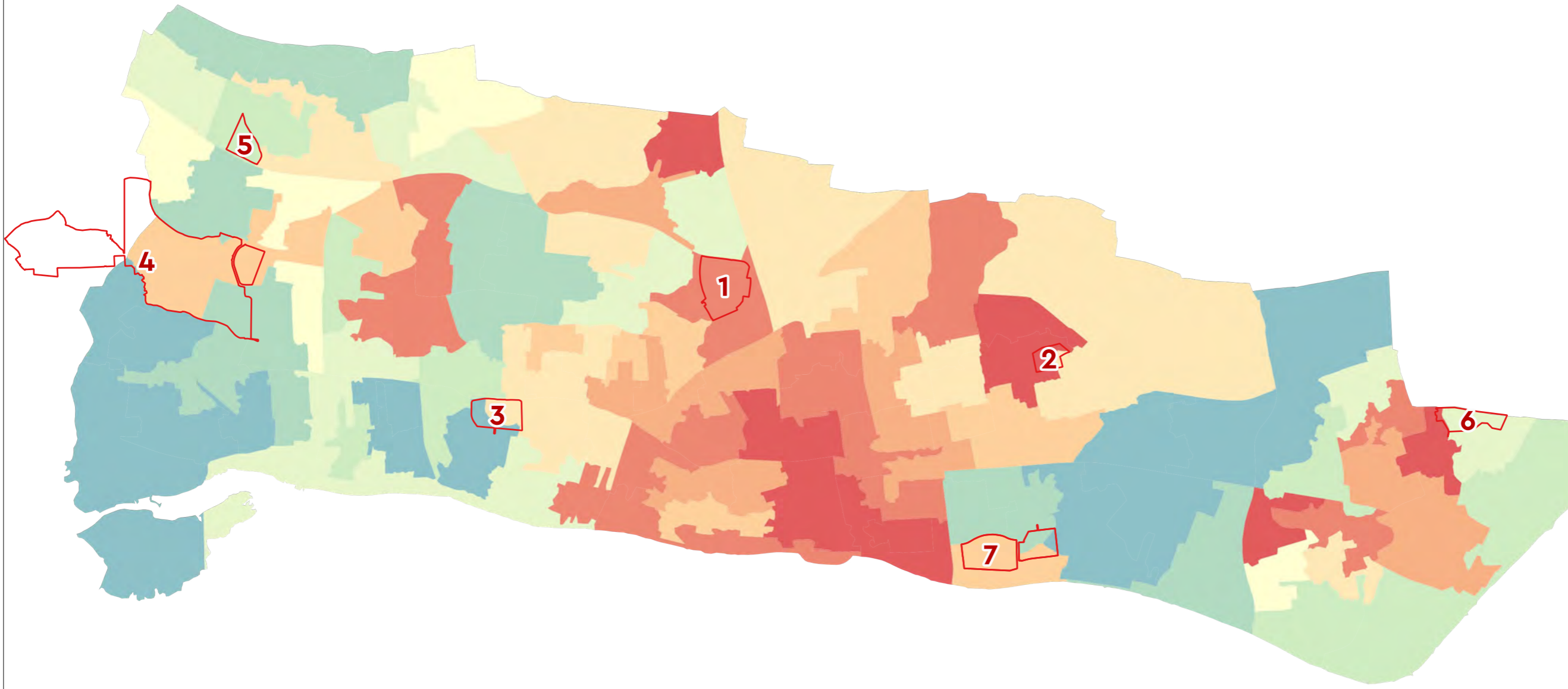
- 1. Priory Park
- 2. Bournes Green Park
- 3. Chalkwell Park
- 4. Belfairs Park
- 5. Oakwood Park
- 6. Friars Park
- 7. Southchurch Park

01 Site location map

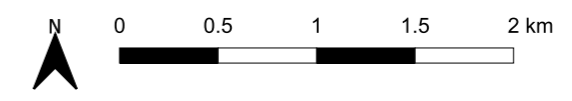


Copyright: OS Open Data, Land Registry Open Data

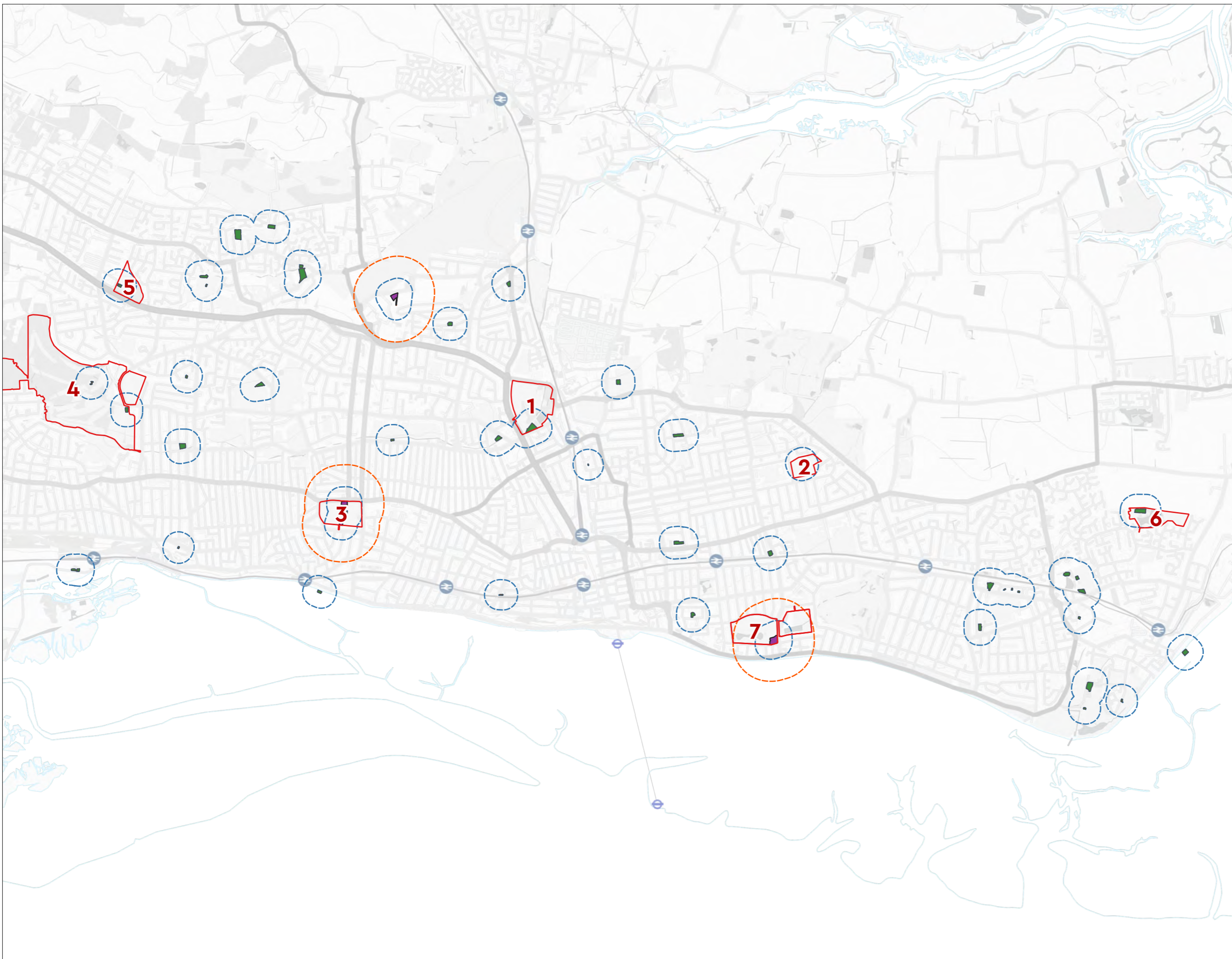
1. Priory Park
2. Bournes Green Park
3. Chalkwell Park
4. Belfairs Park
5. Oakwood Park
6. Friars Park
7. Southchurch Park



02 Site location with IMD



Copyright: OS Open Data,
Land Registry Open Data,
The Consumer Data Research
Centre



- Southend LEAP
- Southend LEAP 240m buffer
- Southend NEAP
- Southend NEAP 600m catchment

1. Priory Park
2. Bournes Green Park
3. Chalkwell Park
4. Belfairs Park
5. Oakwood Park
6. Friars Park
7. Southchurch Park

03 SCC Play areas and catchment areas





Legend: Key community facilities

7 Southchurch Park – Site Context



2003



2006



2011

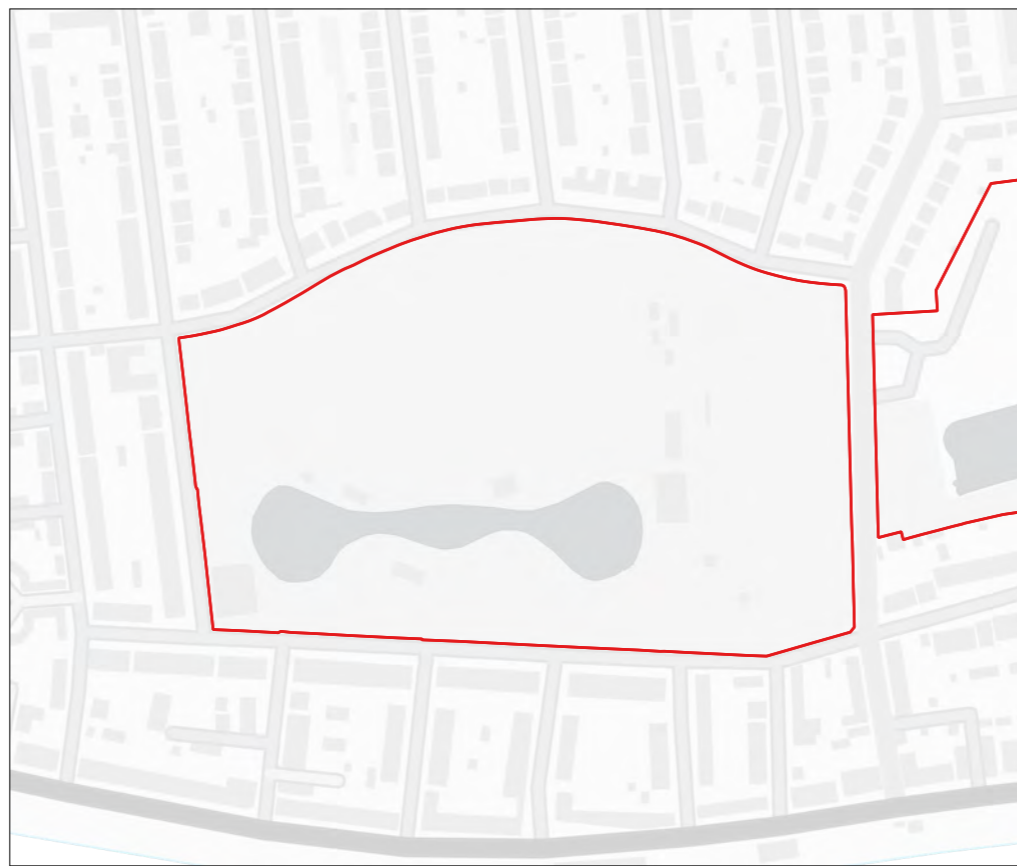


2018

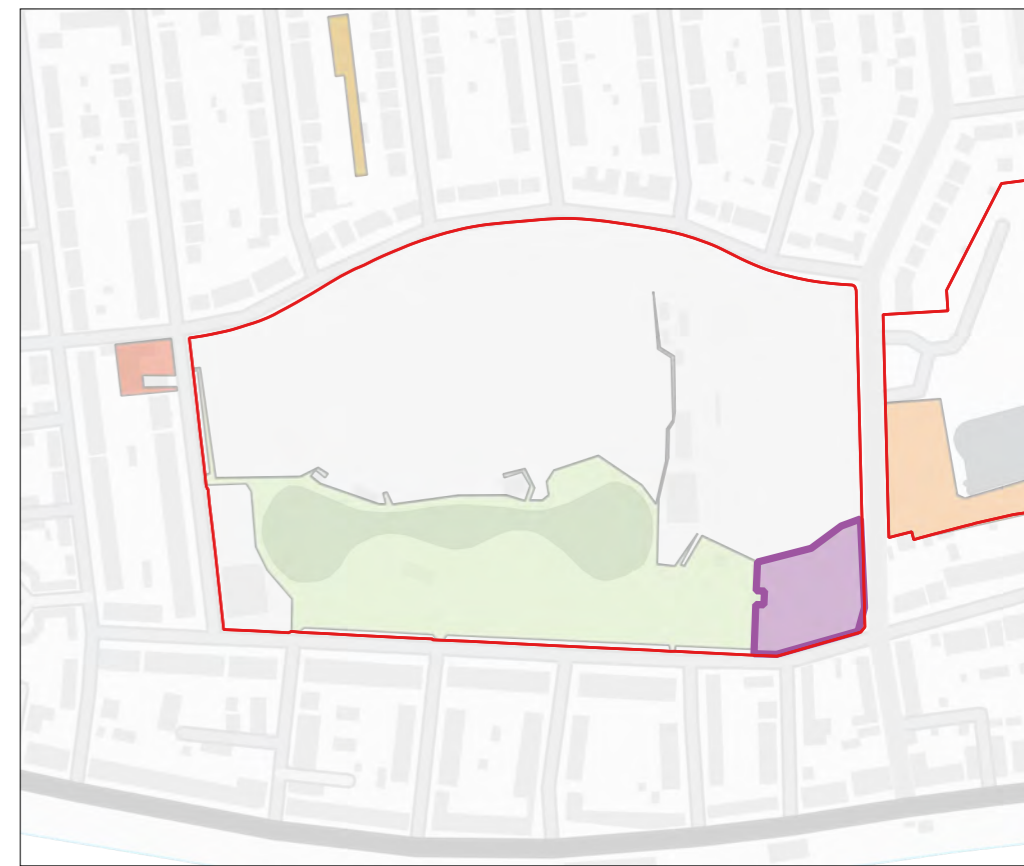


Access

SCC Local Plan
 Access point to Green Spaces
 Cycle Paths in Southend
 Level 2
 Southends Green Spaces
 Bowling Green
 Play Space

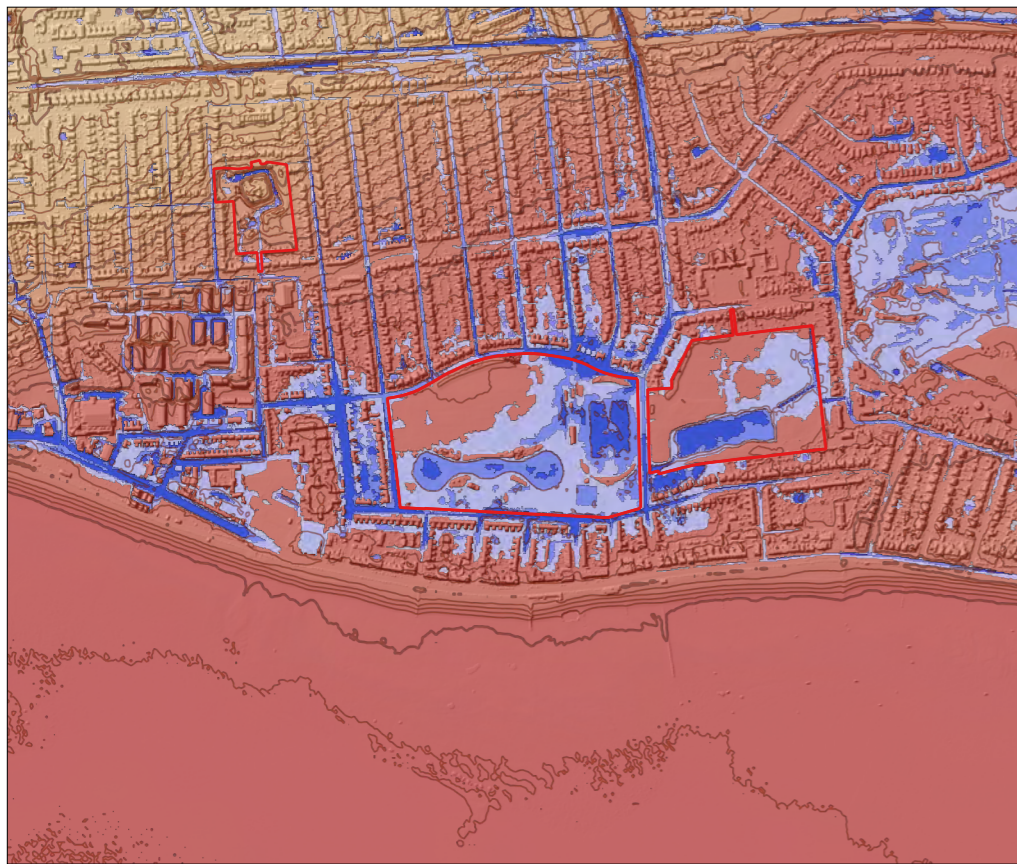


Micro climate

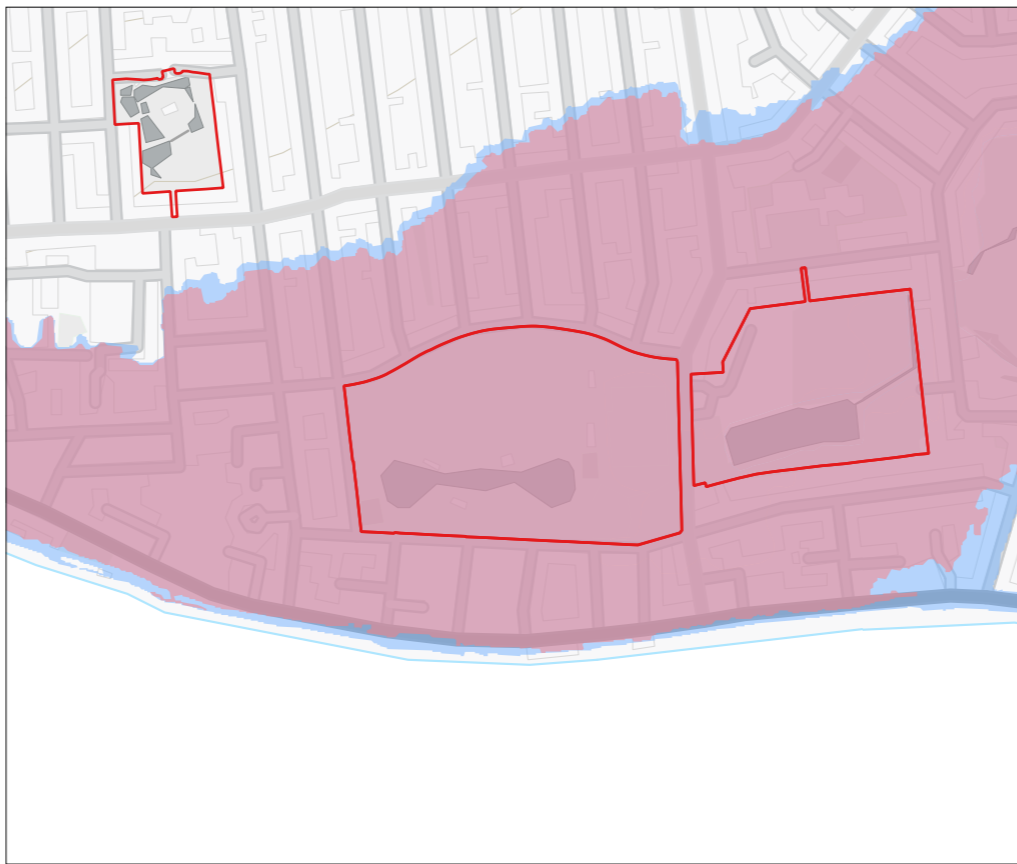


Green infrastructure

Southends Green Spaces
 Bowling Green
 Play Space

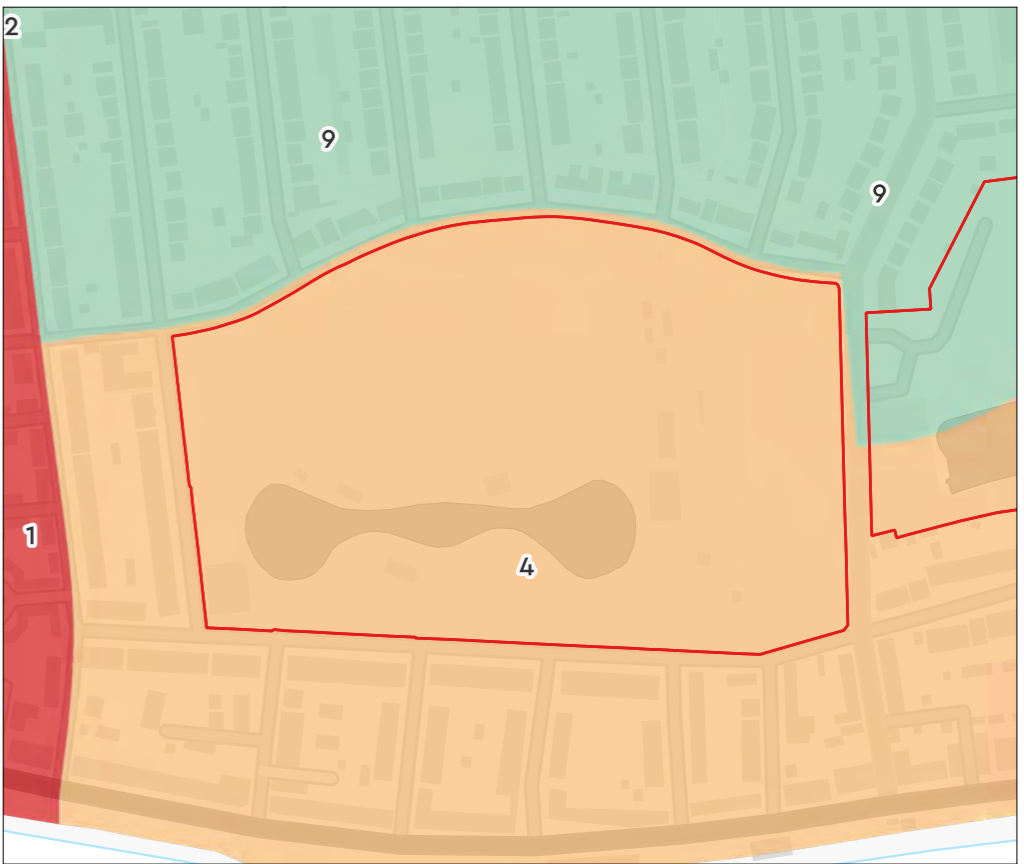


Topography and Risk of Flooding from Surface Water Extent



EA Floodzone (rivers and the sea)

EA Floodzone Level 2
 EA Floodzone Level 3

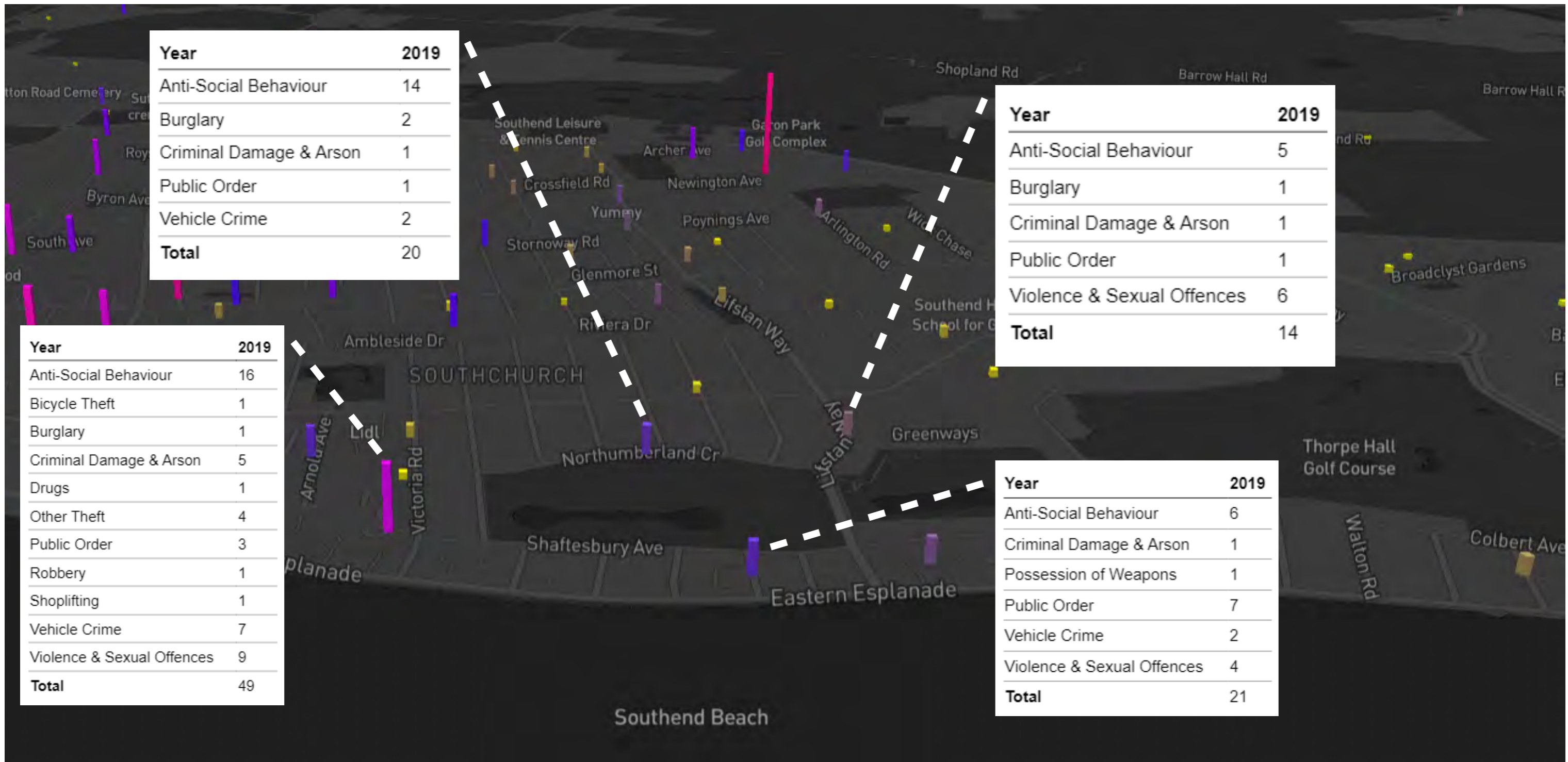


Index of Multiple Deprivation Score 2019

1 - Most deprived decile
 2
 3
 4
 5
 6
 7
 8
 9
 10 - Least deprived decile

7 Southchurch Park – Site Appraisal

Source: Ordnance Survey
 OpenData, Bing Maps, Southend
 City Council, Historic England
 Open Data, Natural England Open
 Data, DEFRA Open Data, Consumer
 Data Research Centre.



- Map Filters**
- Anti-social
 - Burglary
 - Drugs
 - Other Theft
 - Public Order
 - Shoplifting
 - Vehicle
 - Bicycle
 - Damage & Arson
 - Other Crime
 - Poss. of Weapons
 - Robbery
 - Theft from Person
 - Violence & Sexual

Southend-on-Sea Crime Map

Incidents mapped in Southend-on-Sea represent the time frame between June 2020 and May 2023. Each point on the map represents an area where crimes have been recorded locally.

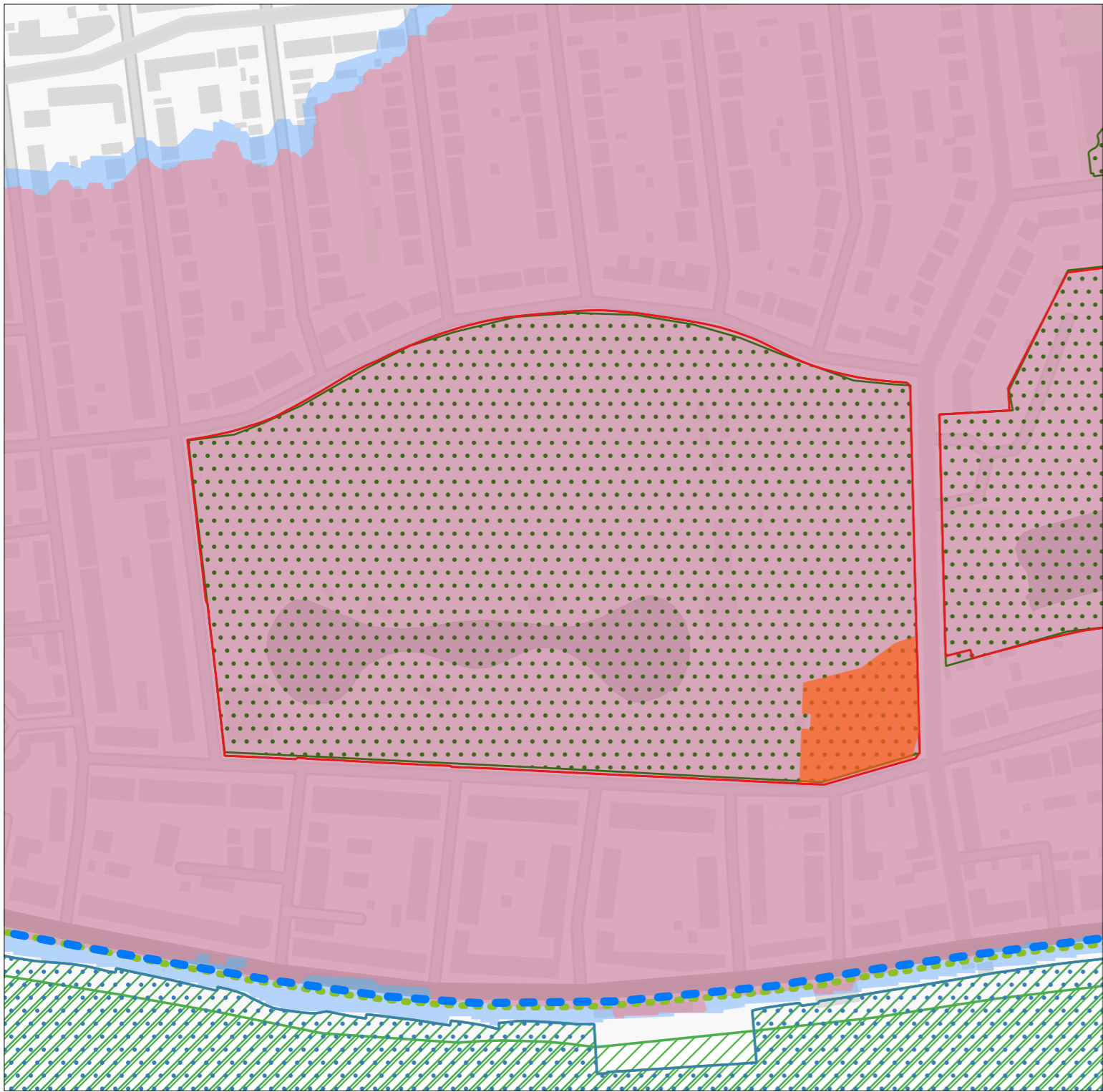
<https://crimerate.co.uk/essex/southend-on-sea>

7 Southchurch Park – Site Appraisal



General Notes

- Play area is in a well connected location and is sectioned off with fencing and hedges.
- Some graffiti and damage to the play equipment was identified.
- Generally the existing play surface still has some life but ideally some of it will need replacing.
- Signage around the site was identified but could do with a refresh.
- Grounds maintenance was generally good, soft landscape is well looked after.
- The bowls club is located to the West of the play area and location of proposed play equipment is to take this into account in order to have a minimal impact on the bowls club.
- Boundary fencing is generally in good condition but the boundary would benefit from infilling the existing hedges in order to create a seamless soft boundary.
- General condition of play equipment is okay but there is a lack of inclusive play and a lot of the play is getting old and potentially unsafe so it would be worth replacing some equipment with new inclusive play elements.



Constraints

- Site boundaries-play area — Play area
 - Site boundaries
 - SCC Local Plan
 - Cycle Paths in Southend
 - Level 2
 - Protected Green Space
 - Natural England
 - England Coast Path Route © Natural England
 - Other existing walked route
 - Ramsar (England) © Natural England
 - Special Protection Areas (England) © Natural England
 - Sites of Special Scientific Interest (England) © Natural England
- Floodzone**
- EA Floodzone Level 3
 - EA Floodzone Level 2

Opportunities

- Site boundaries-play area — Play area
 - Site boundaries
- SCC Local Plan**
- Cycle Paths in Southend
 - Level 2
 - Early Years Care Providers
 - Sports Facilities

7 Southchurch Park – Site Appraisal

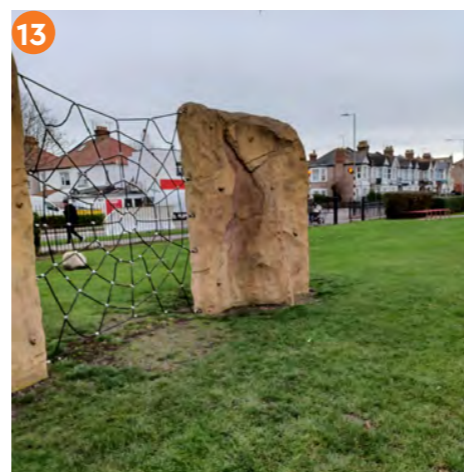
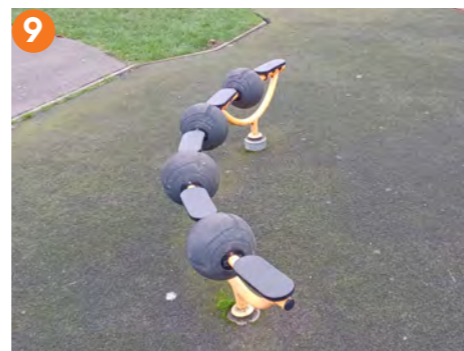
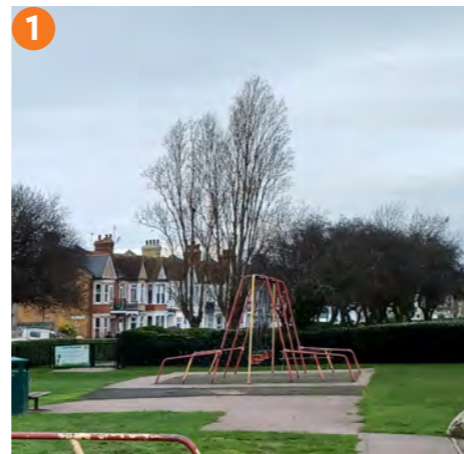


Ref No.	Rating	Survey Notes
1	2	Swing set - Poor condition. To be removed.
2	6	Roundabout - Equipment in good condition. Retain. Replace surfacing.
3	6	Boat springer. Repair and paint. Retain
4	2	Swing set - Poor condition. To be removed.
5	2	Roundabout - Poor condition, doesn't work properly. To be removed.
6	6	Basket swing - Missing basket to be installed. Retain
7	8	Net spinner - Good condition, retain
8	6	Standing seesaw - Tyres and foot supports need replacing. Retain
9	8	Balance beam - good condition, retain
10	8	Multi piece climbing set - Good condition, retain
11	8	Windsail spinner - Good condition, retain
12	3	Zipline - Poor condition, to be removed
13	8	Climbing wall - Good condition, to be retained
14	1	Unknown - Damaged, to be removed
15	7	Multi use play - Burn damage to be repaired. Retain
16	8	Swing - Good condition, retain
17	2	Swing set - Poor condition. To be removed.
18	7	Large multi piece climbing set - Repair, clean and paint, retain
19	2	Multi piece climbing set - Poor condition and tired, remove

Play equipment rating based on:

- Play Value
- Equipment Condition
- Location
- Accessibility
- Safety

7 Southchurch Park – Play assessment



LEGEND

Soft Landscaping

- Existing vegetation to be retained
- Existing tree to be retained
- Proposed infill hedge planting
- Existing amenity grass
- Existing grass mounds to be retained

Hardlandscape Surfacing

- Proposed Self Binding Gravel Footpath
- Proposed Playground Surfacing to match existing (Black)
- Existing Play Surfacing (Black) to be retained
- Existing Tarmac Path to be retained
- Existing Gravel Path to be retained
- Proposed timber edging

Furniture & Features

- Existing Bench to be retained and relocated
- Existing Picnic Bench to be retained

Proposed Play Equipment

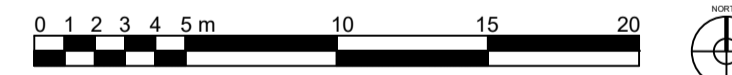
- Proposed Play Structure (Fig 1)
Supplier: *Kompan Saturn Carousel (GXY957)* (Or similar approved)
- Proposed Play Structure (Fig 2)
Supplier: *Play Quest 1 Tower Activity Centre* (Or similar approved)
- Proposed Inclusive Swing (Fig 3)
Product: *Caloo Accessible Swing (ST0517)* (Or similar approved)
- Proposed Seesaw (Fig 4)
Product: *Play Quest See-Saw* (Or similar approved)
- Proposed Balance Beam (Fig 5)
Product: *Play Quest Balance Beam* (Or similar approved)
- Proposed Log Walk (Fig 6)
Product: *Play Quest Twisted log Walk* (Or similar approved)
- Proposed Stepping Logs (Fig 7)
Product: *Play Quest Stepping Logs - 150mm* (Or similar approved)
- Proposed Inclusive Play (Fig 8)
Product: *Play Quest Eco-Multi Chimes - 8 Piece Set* (Or similar approved)
- Proposed Inclusive Play (Fig 9)
Product: *Play Quest Eco-Rain Wheel* (Or similar approved)
- Proposed Inclusive Play (Fig 10)
Product: *Play Quest Musical - Bongos Panel* (Or similar approved)
- Proposed Inclusive Play (Fig 11)
Product: *Play Quest Playtronic Panel - Piano Keys* (Or similar approved)
- Proposed Inclusive Play (Fig 12)
Product: *Play Quest Quali-Cite Inclusive Roundabout* to be installed in place of existing removed roundabout (Or similar approved)
- Proposed Swing Set (Fig 13)
Product: *Kompan 4-Seat Steel Frame H:2.5m (KSW924)* with 2 standard seats & 2 cradle seats (Or similar approved)

Existing Play Equipment

- Existing boulders to be retained and relocated
- Existing shelter to be retained
- Existing roundabout to be retained (Fig 14)
- Existing seesaw to be retained
Tyres and steps to be replaced. (Fig 15)
- Existing balance beam to be retained (Fig 16)
- Existing climbing frame to be retained (Fig 17)
- Existing spinner to be retained (Fig 18)
- Existing climbing net to be retained (Fig 19)
- Existing balance play to be retained (Fig 20)
- Existing play swing to be retained (Fig 21)
- Existing play structure to be retained (Fig 22)
- Existing boat springer to be retained (Fig 23)
- Existing climbing boulders and net to be retained (Fig 24)
- Existing basket swing frame to be retained
New basket swing to be added to frame. (Fig 25)

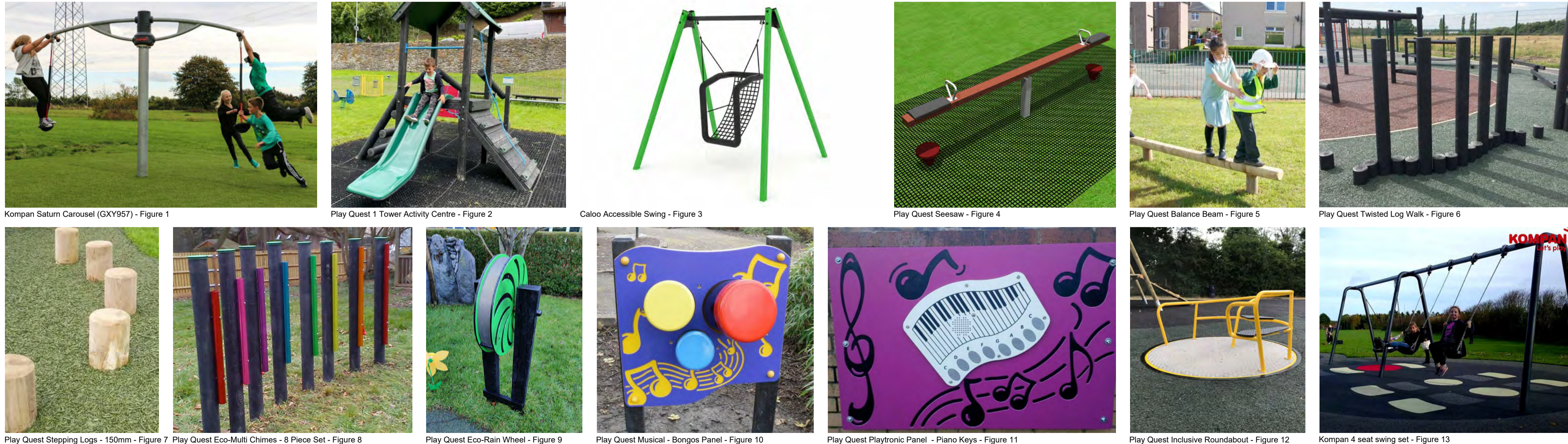


General Arrangement Plan - Scale: 1:250 @ A1

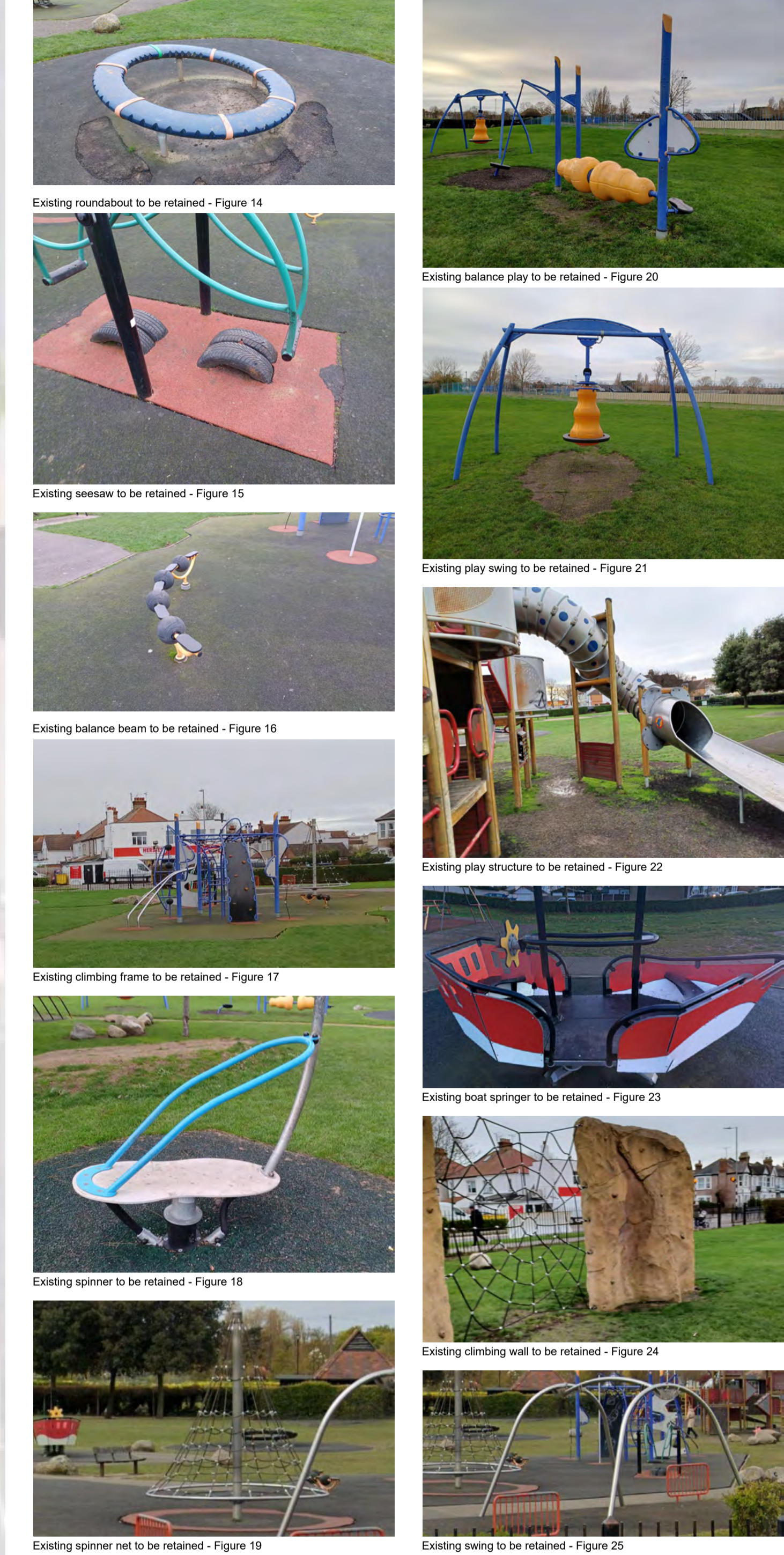


This General Arrangement Plan is based on Google aerial photo information and is indicative only. Do not measure from this drawing.

Proposed Play Equipment and Features



Existing Play Equipment and Features



Rev	1st Issue	17/01/2024	DD	RA
	Changes	Date	DR by	AP by

Ground Control
 Ground Control Ltd., Kingfisher House, Radford Way, Billericay, Essex, CM12 0EQ
 T: 01277 650 697 E: info@ground-control.co.uk www.ground-control.co.uk
 Client

Southend-on-sea City Council
 Project (Address)
Southchurch Park
 Shaftesbury Avenue, Southend-on-Sea, Essex, SS1 2XB

Drawing title
General Arrangement Plan

Drawing No.	RIBA Stage	Status	Rev
J230567-GGC-ZZ-ZZ-D-L-0107	3	-	P01

Scale(s)	1st Issue Date	Drawn by	Checked by
1:250 @ A1	17/01/2024	DG	RA

Notes:
 1. © This drawing is the copyright of Ground Control Ltd and cannot be reproduced in any form without express consent of the company.
 2. Do not scale off this drawing. All written dimensions are to be checked on site prior to commencing works.
 3. All discrepancies, errors or omissions are to be reported for clarification before proceeding.